

CS-PT1200A Series Pressure Transmitter

Product Features

- Ceramic piezo-resistive sensing element
- Measuring range: 0...5~50bar (Gauge)
- Accuracy: 0.5 %F.S
- Output: 4 ... 20 mA
- Electrical connection: DIN43650C、 M12
- Pressure connection: G1/4、 NPT1/4、 G1/2
- High accuracy and high cost performance
- Suitable for mass production

Applications

- General pressure measurement
- Machinery manufacturing
- Measurement and control technology
- Hydraulic and pneumatic technology
- Pumps and compressors

Product Description

Designed for general industrial application, CS-PT1200A series pressure transmitters feature compact structure, stable quality and high cost performance.

CE and RoHS certification enables extensive use of CS-PT1200A series pressure transmitters all over the world. We can supply you in short term products with different pressure units and pressure connections to meet your specific applications.

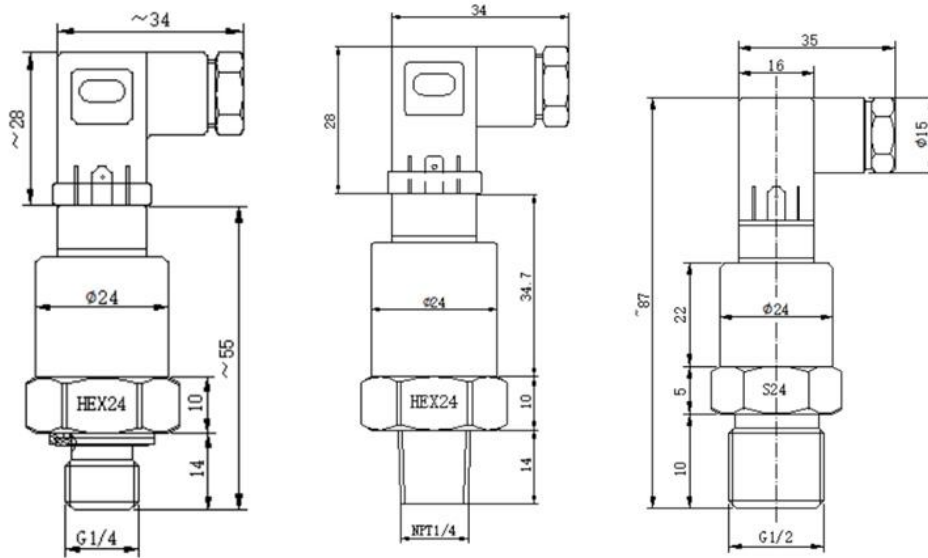
Performance Parameters

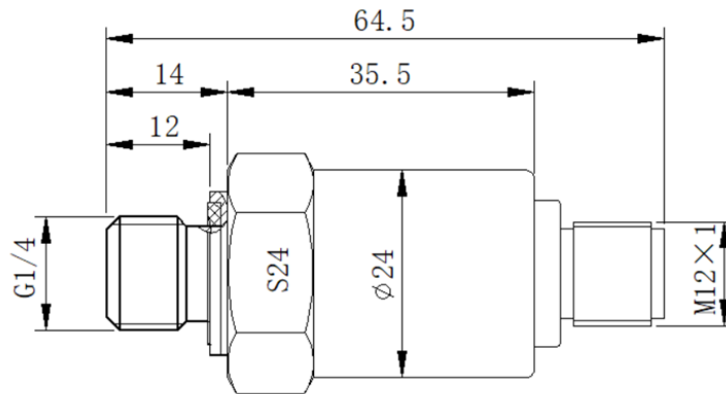
Temperature: 25°C, power: 12VDC, RH: 45%~75%, Atmospheric pressure: 86KPa~106KPa

Pressure Range	0...5~50bar Gauge
Output Signal	4mA~20mA
Power supply (U+)	10~30VDC
Output Load	$\leq(U+ - 10) / 0.023\Omega$
Over Voltage	30VDC
Reverse Voltage	-30VDC
Accuracy at Room Temperature	$\pm 0.5\%$ F.S.
Medium Temperature	-30°C~120°C
Ambient Temperature	-20°C~85°C

Storage Temperature	-40°C ~ 100°C
Long-term Stability	±0.5% F.S / year
Settling Time	(10% ~ 90%) ≤ 10ms
Overload Pressure	≥ 150% F.S
Burst Pressure	≥ 200% F.S
Pressure Connection	G1/4, NPT1/4, G1/2
Electrical Connection	DIN43650C, M12
Sealings Materials for Wetted Part	NBR
Housing Material	304 stainless steel
Insulation Resistance	≥ 100MΩ @ 100VDC
Vibration Resistance	10g, 5~2000Hz
Shock Resistance	20g, 11ms half sine
Ingress Protection	≥ IP65

Structures and Dimensions





Wiring Definition

DIN43650C Connector	Pin	Definition
	1	Power Supply+ (U+)
	2	Current Output (Io)
	3	
	⊕	Shield (PE)

M12x1 4-pin Connector	Pin	Definition
	1	Power Supply+ (U+)
	2	Current Output (Io)
	3	
	4	Shield (PE)

Notice:

- The pressure transmitter must be used in a medium that is non-corrosive to the seal material and the housing material.
- In case the pressure guiding hole of the transmitter is blocked, it is forbidden to use sharp tools to clear it. Instead, one should remove the transmitter from the system, immerse the pressure guiding hole part in the liquid which can dissolve the blockage, and then the blockage will flow out easily.
- It's prohibited to open the transmitter by users for calibration or repair.
- Please contact ChinaStar if you're not sure whether the transmitter is suitable for the medium to be measured.
- The transmitter should be installed in a location that is not easily bumped or stepped on.
- Exceeding of the transmitter overload pressure may cause permanent damage.
- Where lightning may occur, customers should consider lightning protection measures.

Statement

ChinaStar Company reserves the right to modify the specifications and contents of this instruction. No further notice will be given if any changes are made. Due to product updates, the individual details of this document may not match the product. Please refer to the actual product. The right to interpret this document belongs to ChinaStar Company.
